

SONATA REGATTA 2023 Notice of Race

presented by the
Sonata Yacht Association (SYA)



hosted by the
Geelong Trailable Yacht Club (GTYC)



On the waters of Corio Bay off St Helens Boat Harbour

Saturday and Sunday
18 and 19 February, 2023

Issue Date: January 2023

The organising authority is the Geelong Trailable Yacht Club Inc.

1. Invitation

The Sonata Yacht Association (SYA) and Geelong Trailable Yacht Club (GTYC) invite all SYA members to St Helens Boat Harbour and the waters of Corio Bay.

The aim of this event is to provide:

- A combined fleet of Sonatas and invited members, with opportunities to meet and mingle
- A weekend of racing for all levels of sailing experience and expertise
- Good sailing with competition, variety and fun
- An enjoyable social Saturday evening meal

GTYC have run excellent racing series in past years and we look forward to their warm hospitality again.

2. Program

Saturday 19 February

Briefing 0930
Three races 1030 – with a lunch break ashore
Dinner 1900

Sunday 20 February

Briefing 0900 – including allocated start times for the sternchaser
Sternchaser 0940
Presentation 1400

3. Entry

Entry is open to all SYA members. The entry form is available from the SYA web site or can be emailed on request. Cost is \$60 per boat for the full regatta or \$30 per boat for the Sunday race only.

Boats must meet minimum requirements for Category 6, as defined in *Australian Sailing 2021 Special Regulations Part 1 for Racing Boats*. A check list for Cat 6 is attached (Appendix 2).

Spinnakers are not permitted.

Entries should be submitted by Friday 10 February 2023.

4. Catering

Breakfast Egg, bacon, tomato, toast, tea/coffee available Sunday morning (\$5 each)

Lunches Salad rolls can be ordered for each day. (\$8 each)

Dinner Saturday night – Roast meat and vegetables with dessert

(Free to all competitors and any other SYA members, \$20 for others)

All food needs to be pre-ordered on your entry form and payment made at briefing on Saturday.

5. Sailing Instructions

Sailing Instructions will be emailed to you and will also be available on the SYA website and displayed at the event.

6. Courses

Saturday races will be triangle, windward return courses around laid marks.

Sunday is a sternchaser with start times allocated by the race organisers.

Course diagrams are attached (Appendix 1).

7. Accommodation

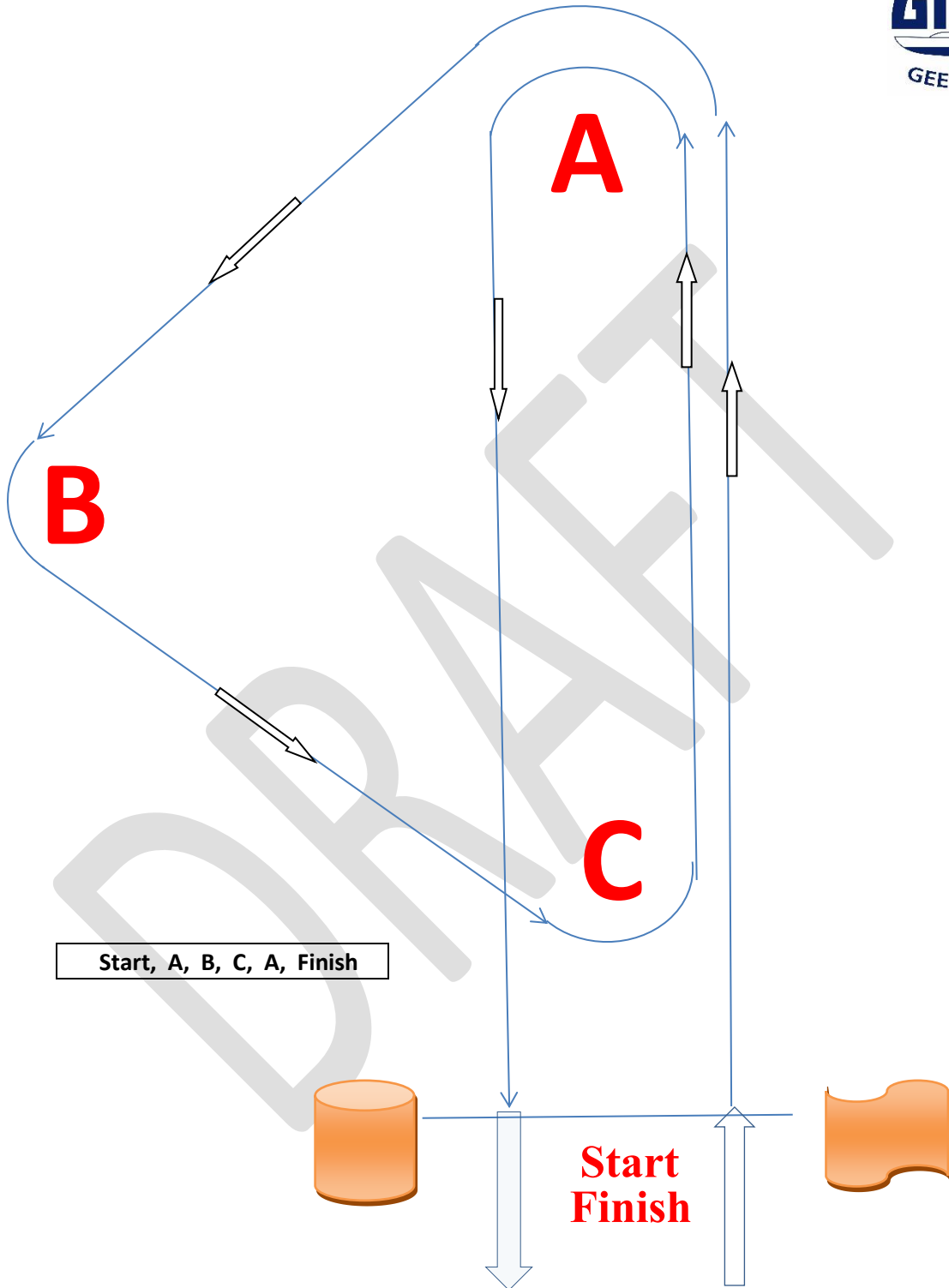
The St Helens boat harbour is a pleasant spot to overnight and many will choose this option. Arrival on Friday night is okay. Facilities include boat ramp, floating pontoon jetties and car/trailer parking. Toilets and hot showers are available. Alternatively there are motels nearby.

8. Contacts

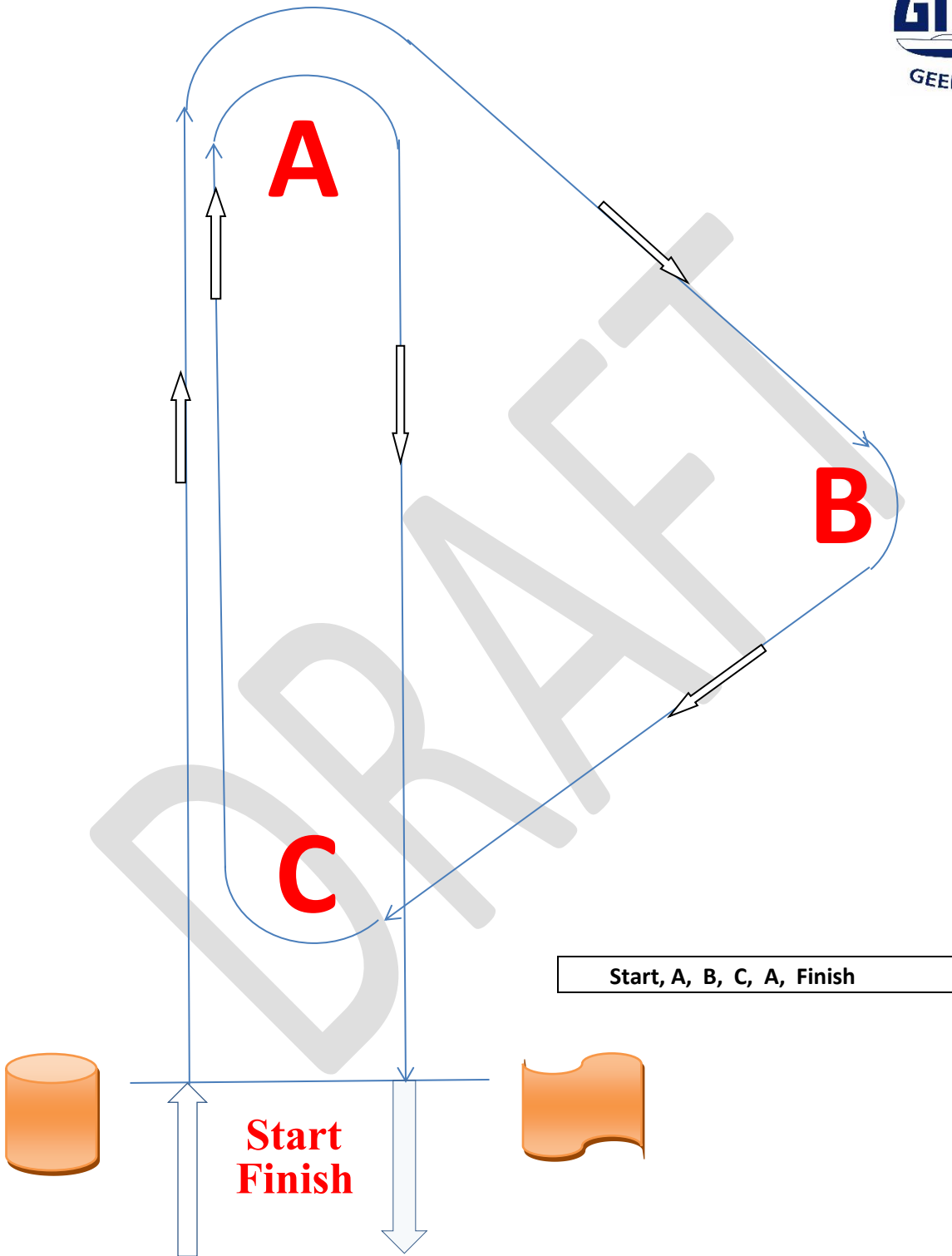
GTYC **John Mole** **0411 142917**
(Principal Race Officer) jamole64@bigpond.com

SYA **Mick Floyd** **0409 414777**
mickfloyd@gmail.com

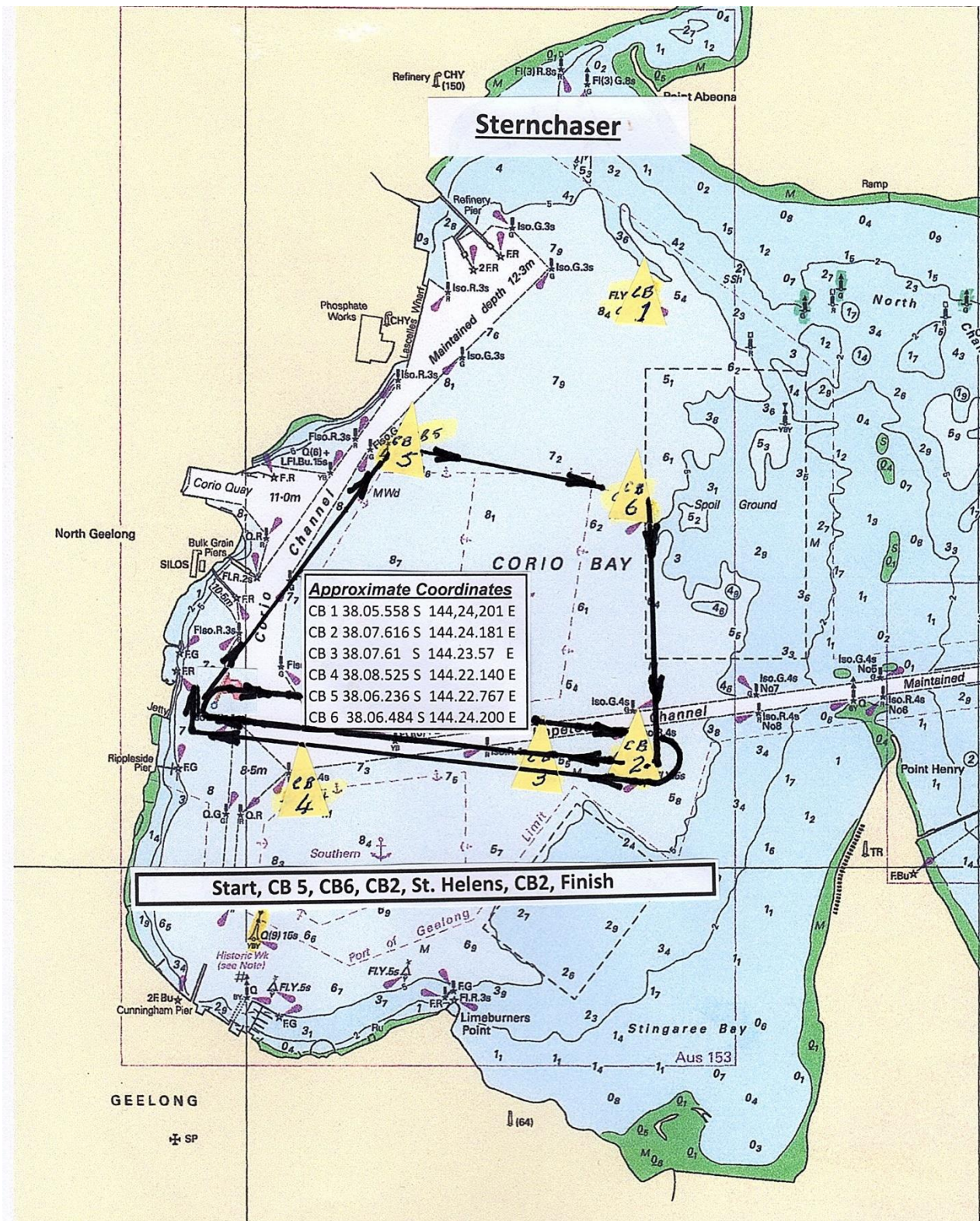
Port Course



Starboard Course



Sternchaser



Appendix 2

GEELONG TRAILABLE YACHT CLUB

***Mandatory minimum requirements checklist for Category 6,
as defined by
AUSTRALIAN SAILING SPECIAL REGULATIONS PART 1 FOR RACING BOATS***

Reg No.	Subject	Category 6
2.03.1	Equipment of suitable type & capacity & functions	
2.03.2	Ballast and heavy equipment secured	
3.01.1	Strength of build ballast and rig	
3.01.3	Stability and buoyancy	
3.02	Watertight integrity of hull	
3.02.3	Keel lockdown while racing	
3.04	Stability - monohulls	
3.06(b)	2 exits	
3.07	Forward Hatch opens outwards & above water	
3.08	Cockpit drainage	
3.12.6	Lifelines	
3.17	Galley Stove (if gas to AG601), Warning Notice and secured against capsize	
3.20.6&7	Manual Bilge Pumps 25mm (if fitted)	
3.20.9	Two buckets with lanyards	
3.24	Outboard engine carrying requirements	
3.25	Marine radio requirements	
3.28.1	Identification on hull	
4.01	Sail Numbers	
4.04	Fire Extinguishers, Serviced	
4.05	Anchor, 5m chain, 45m warp, appropriate size	
4.06	Flashlights, 1	
4.07	First Aid Kit in w/proof container with contents list	
4.10.3	AS "Blue Book"	
4.15.3	Sharp knife at each cockpit	
4.16	Boat's name on all loose equipment	
4.17	Retro Tape on personal flotation devices etc. (State Law)	
4.22	Flares: 2 red, 2 orange	
4.26	Method of retrieving crew from the water	
5.01	Personal flotation devices - 1 per crewperson (Note requirement for whistle)	
6.01	Routine training on board	

Attention of all competitors is drawn to the complete list of safety equipment which is "required" and 'recommended' for category 6 racing as shown in;
AUSTRALIAN SAILING SPECIAL REGULATIONS PART 1 FOR RACING BOATS

The checklist above includes only those items, which are listed as minimum requirements under Category 6, and does not list additional recommended safety equipment shown in the above publication.