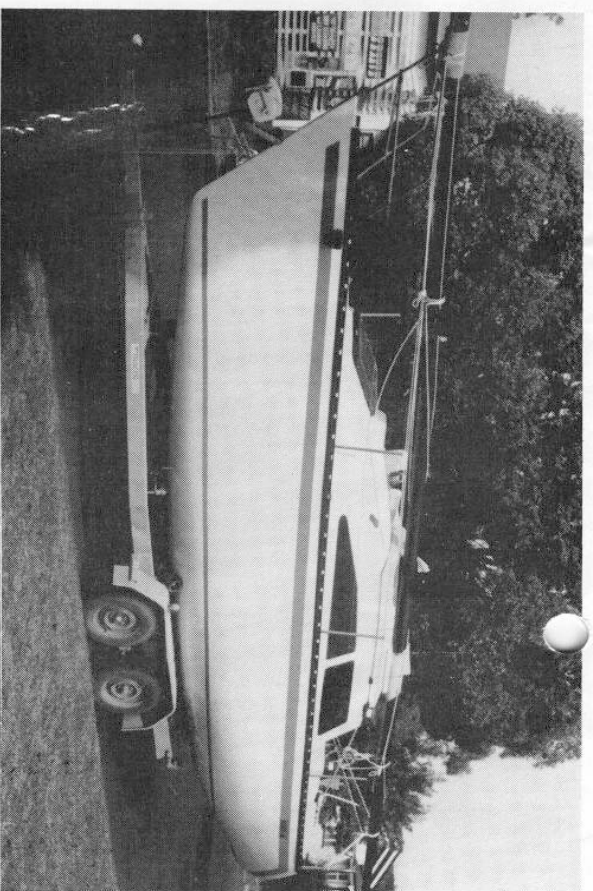
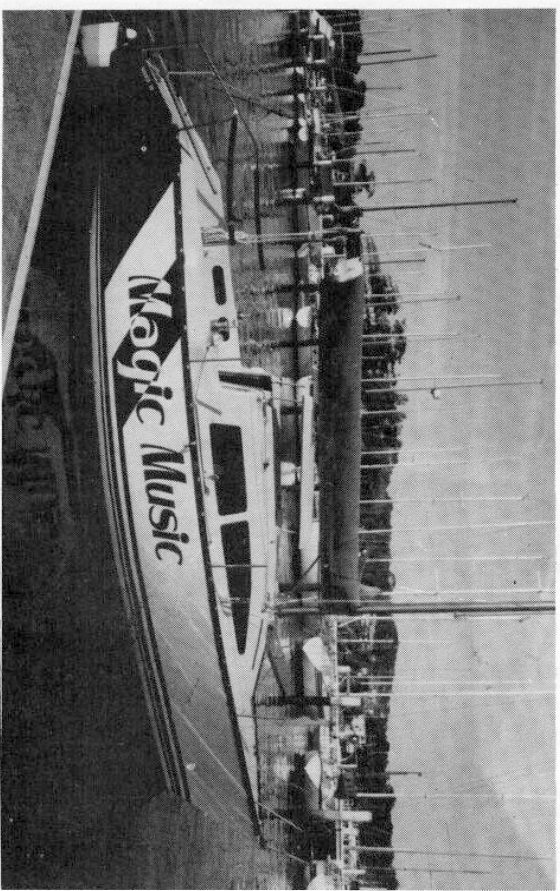


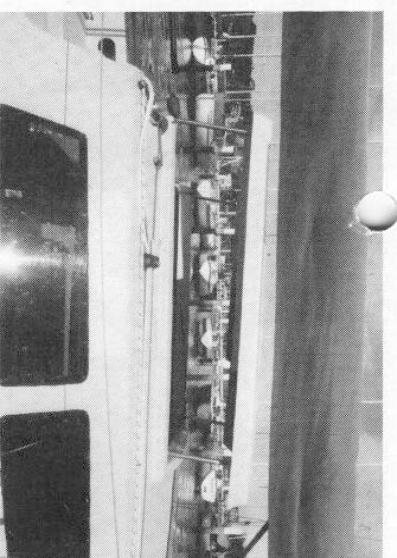
Sonata 26



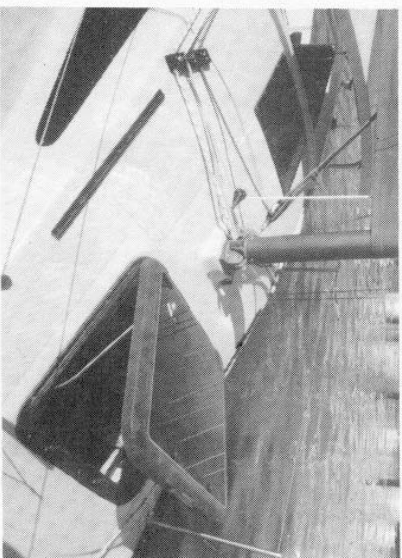
● Sonata 26 sits snugly on its trailer. It is easy to launch and recover. With only 0.2 metre draft you don't have to sink the trailer.



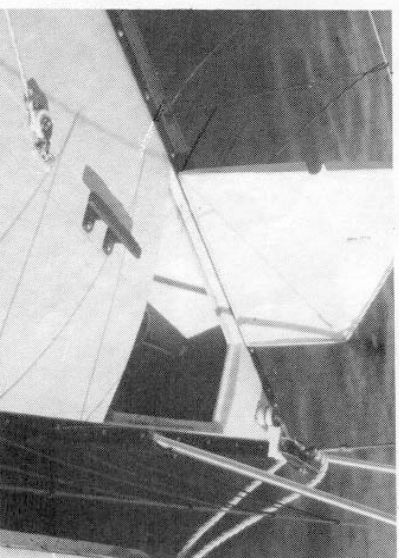
● Clean functional lines and well balanced proportions would make you proud to own a Sonata 26. The cutaway transom is a definite safety feature as well as provides easy access in and out of the cockpit.



● Headroom is generous with 1.7 metres pop top down. 1.9 metres pop top up. The pop top is a real bonus when it comes to ventilation for the boat. A quickly attached cover goes over the pop top making it weatherproof when up.

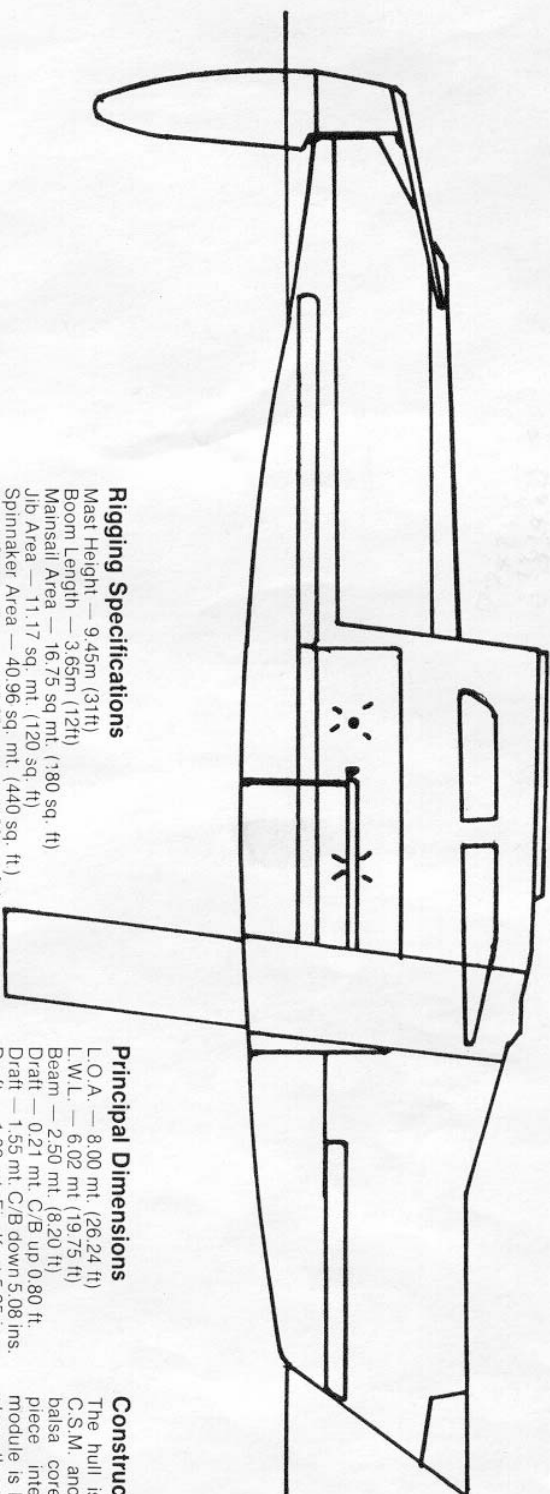


● Clean, efficient deck layout with controls leading back to cockpit. Hinged mast step makes stepping and unstepping a breeze. Note high quality canpa hatch.



● Large self draining anchor well located on foredeck. Substantial mooring cleat. Stainless steel bow fitting with roller. Slotted alloy toe rails.

Sonata 26 — MAKES YOUR DREAMS COME TRUE



Rigging Specifications

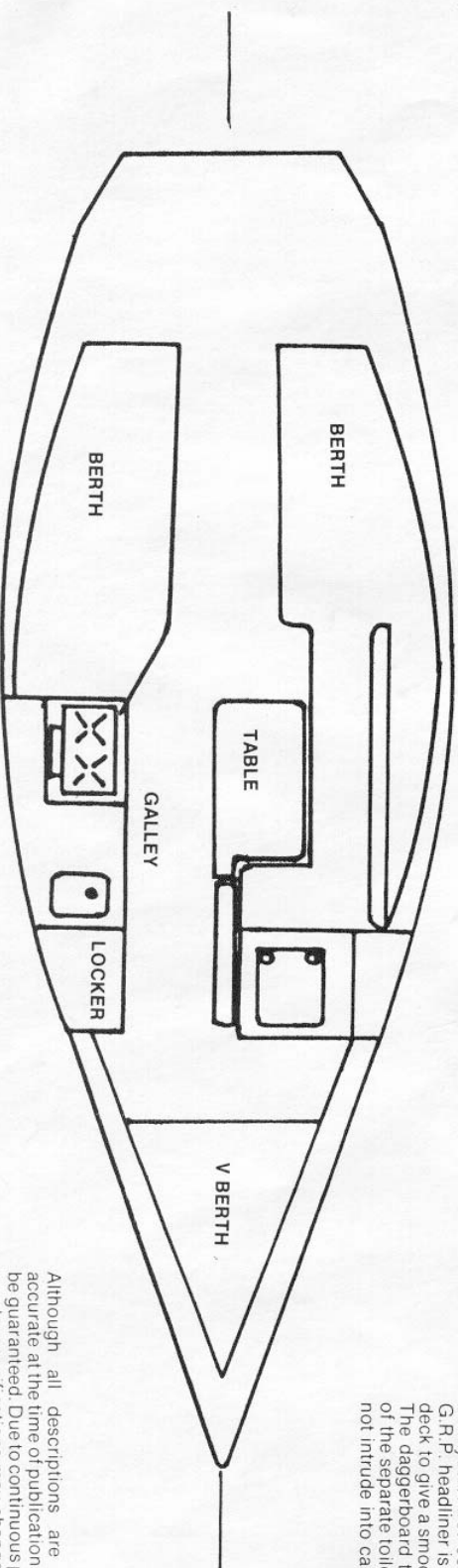
Mast Height — 9.45m (31ft)
 Boom Length — 3.65m (12ft)
 Mainsail Area — 16.75 sq. mt. (180 sq. ft.)
 Jib Area — 11.17 sq. mt. (120 sq. ft.)
 Spinnaker Area — 40.96 sq. mt. (440 sq. ft.)
 No. 1 Genoa Area — 17.69 sq. mt. (190 sq. ft.)

Principal Dimensions

L.O.A. — 8.00 mt. (26.24 ft)
 L.W.L. — 6.02 mt. (19.75 ft)
 Beam — 2.50 mt. (8.20 ft)
 Draft — 0.21 mt. C/B up 0.80 ft.
 Draft — 1.55 mt. C/B down 5.08 ins.
 Draft — 1.60 mt. Fin Keel 5.25 ins.
 Displ. — 1280 kg. (2816 prds)

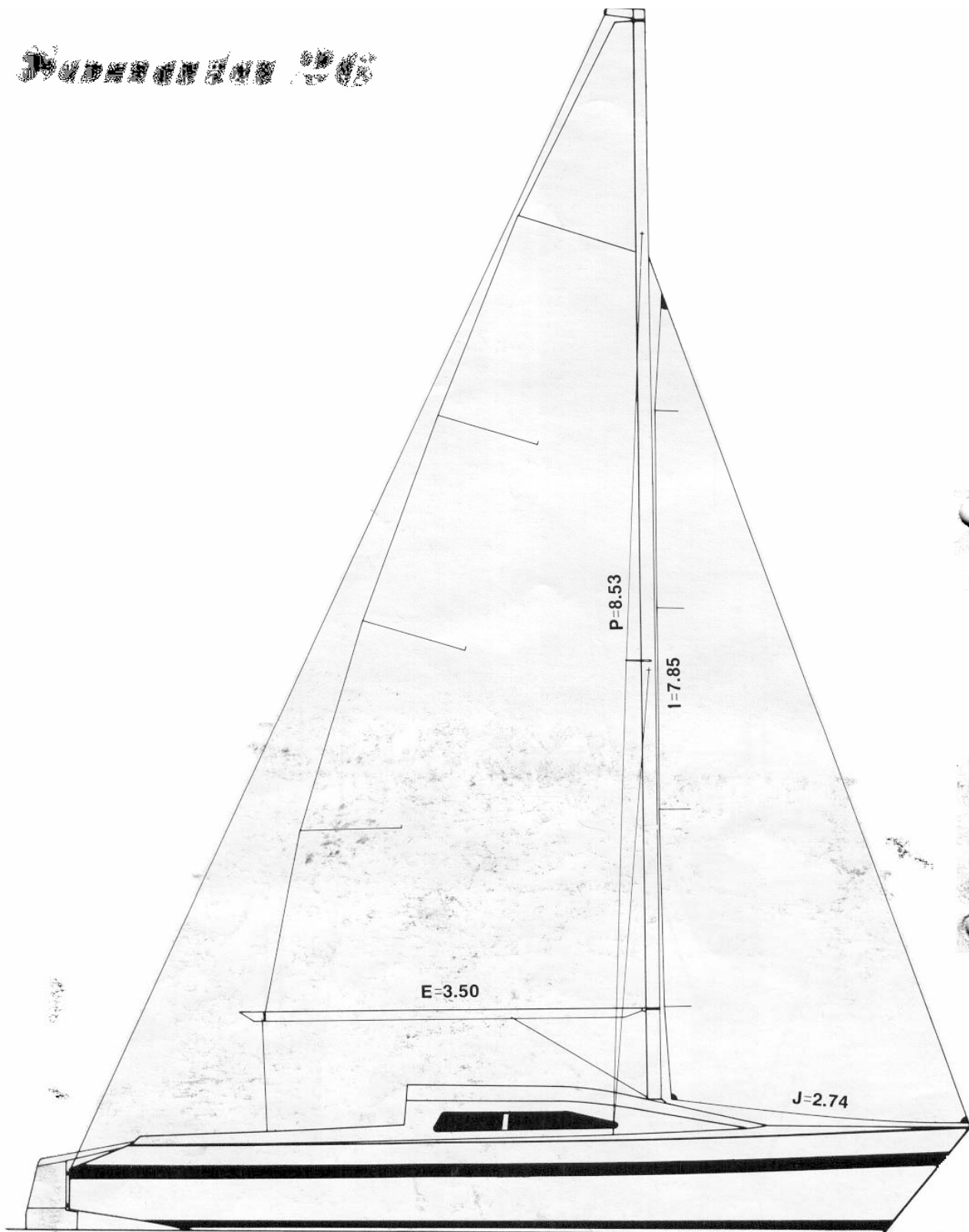
Construction

The hull is a G.R.P. laminate of C.S.M. and woven rovings with a balsa core backbone. The one piece internal G.R.P. furniture module is bonded in giving extra strength and rigidity. The deck is a one piece G.R.P. laminate again of C.S.M. and woven rovings with a Divinycell/Firet core. A one piece G.R.P. headliner is bonded into the deck to give a smooth finish inside. The daggerboard trunk forms part of the separate toilet wall and does not intrude into cabin space.



Although all descriptions are believed to be accurate at the time of publication accuracy cannot be guaranteed. Due to continuous product improvements, specifications may change without notice.

Investigator 203



Manufactured by:
INVESTIGATOR YACHTS PTY. LTD.
Lot 11, Macquarie Road,
Cardiff, N.S.W. 2285
(049) 54 5303

Distributed by:

SYDNEY SAILBOAT CENTRE (N.S.W.) P/L
BY THE BRIDGE
THE SPIT, MOSMAN 2088
PH. 969-2144
1 MONA VALE ROAD
MONA VALE 2103
PH. 997-3077



SUNDANCE

MARINE SALES

13 PRESTIGE DRIVE, CLAYTON SOUTH, VICTORIA 3169
PHONE: (03) 551 7866

September, 1990

S O N A T A 26

BASIC ASSEMBLY

Fibreglass hull with furniture bonded in. Deck bonded to hull. Keel fitted with hydraulic lift. Windows cut-out. Anchor well bonded in. Cockpit drains fitted. Towing eye fitted. All other fibreglass hatches and mouldings supplied loose. Coloured waterline. Rudder blade.

\$ 21,600

READY TO SAIL

As above with following all fitted, tinted windows, all hatches, gunwales, pop top mechanism, stem fittings and chain plates, 2 halyard winches with cleats, 2 sheet winches with cleats, mainsheet traveller and car, rudder, mooring cleat. Mast, boom with standing and running rigging, boom vang, mainsail with battens and insignia, jib, mainsheet and jib sheets.

\$ 34,560

CRUISE PACKAGE

As above with front runner interior lining, teak trim, galley available in two positions with sink, pump and water tank, 2 burner stove, built in ice box, plate and cutlery racks, porta potti toilet, cloth bunk cushions, pulpit, pushpit, stanchions and life lines, navigation and interior lights, fire extinguisher, outboard bracket or outboard well, anchor, chain and line.

\$ 41,760

OPTIONS

Freight to Melbourne	700
Trailer, galvanised tandem with 4 wheel disc brakes	4,750
Spinnaker	935
No.1 Genoa	820
Storm jib	288
Spinnaker pole & gear	680
8HP 2 stroke Yamaha O/B motor	P.O.A

Prices are ex Factory NSW and inclusive of Sales Tax.

Prices and specifications are subject to change without notice.

DAVID ROSE YACHTS

The Editor,
SONATA NOTES.

The new Careel/Sonata 26 has just been shown at the Sydney Boat Show and we thought your Victorian members might like to know just what we've done so far.

- The cabin is very comfortable with superb upholstery.

If anyone wants photos etc. please contact us.

Basic Assembly including keel, hydraulics and rudder blade

\$21,600.00

\$35,000.00

\$44,000.00

key wheel & 10:1 winch
\$ 4,500.00

\$ 4,200.00

Yours sincerely,

David Rowe.

14 CURRAWONG AVENUE PALM BEACH NSW 2108
TEL: (02) 974 4701 SYDNEY AUSTRALIA FAX: (02) 974 5669
ACN 000 809 370

CAREEL SONATA 26

SPECIFICATIONS

LOA	8.00m (26.24ft.)
LWL	6.02m (19.75ft.)
Beam	2.50m (8.20ft.)
Draft	0.21m (0.80ft.)
CB up	1.55m (5.08ft.)
down	1.87m (6ft 2in.)
Headroom	with pop-top raised.
Weight on trailer	1800kg.
Mast Height	10.06m (33ft.)
Boom Length	3.65m (12ft.)
Mainsail	16.75sqm (180sqft.)
Jib	11.17sqm (120sqft.)
Genoa	17.69sqm (190sqft.)
Spinnaker	40.96sqm (440sqft.)



CAREEL SONATA 26

DAVID ROSE YACHTS Pty. Ltd.
Palm Beach, NSW, 2108
Phone: (02) 974 4701
Facsimile: (02) 974 5669

BASIC ASSEMBLY

Fibreglass hull using Ferro silicone impregnated gel coat and woven rovings with furniture bonded in. Deck bonded to hull. Lead filled, fibreglass keel fitted, weight: 350kg with hydraulic lift operated from cockpit. Windows cut out. Anchor well bonded in. Large cockpit drains fitted, towing eye fitted. All other fibreglass hatches and mouldings supplied loose. Coloured waterline. Fibreglass rudder blade. **\$21,600.**

READY TO SAIL

As above with tinted windows fitted, all hatches fitted, anodised alloy slotted gunwales fitted, pop-top mechanism fitted, stem fittings and chain plates fitted, 2 halyard winches fitted with cleats, 2 speed sheet winches with cleats, mainsheet traveller and car, stainless steel and fibreglass rudder fitted, mooring cleat fitted. Tapered mast, boom with standing and running rigging, boom vang. Mainsail with battens and insignia. Jib, mainsheet and jib sheets. Translucent forward hatch. **\$35,000.**

CRUISE PACKAGE

As above with front runner soft interior lining, teak trim, carpet, galley with 2 drawers and cupboard and stainless steel sink, pump and 100l water tank. 2 burner stove, 45l ice box, Porta Potti toilet with curtain. Custom made cloth bunk cushions with matching padded back rests. Stainless steel pulpit, stanchions and life lines padded in cockpit area, navigation lights and 4 fluorescent interior lights. Fire extinguisher. Lifting outboard bracket. Anchor, chain and line. **\$44,000.**

Specially designed galvanised 4 wheel trailer with brakes, vacuum booster, jockey wheel plus 10:1 winch. **\$4,500.**

Specially designed galvanised 2 wheel trailer with brakes, vacuum booster, jockey wheel plus 10:1 winch. **\$4,200.**

Sun awning. **\$175.**

Self tacking jib. **P.O.A.**

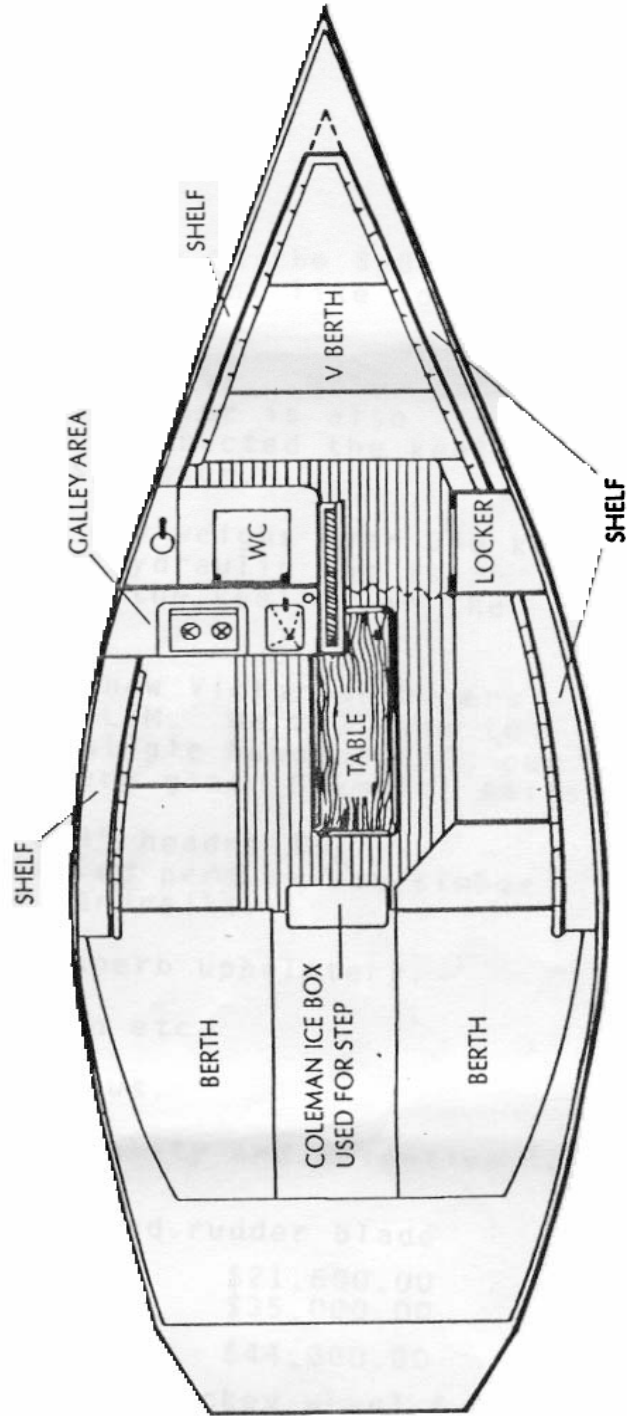
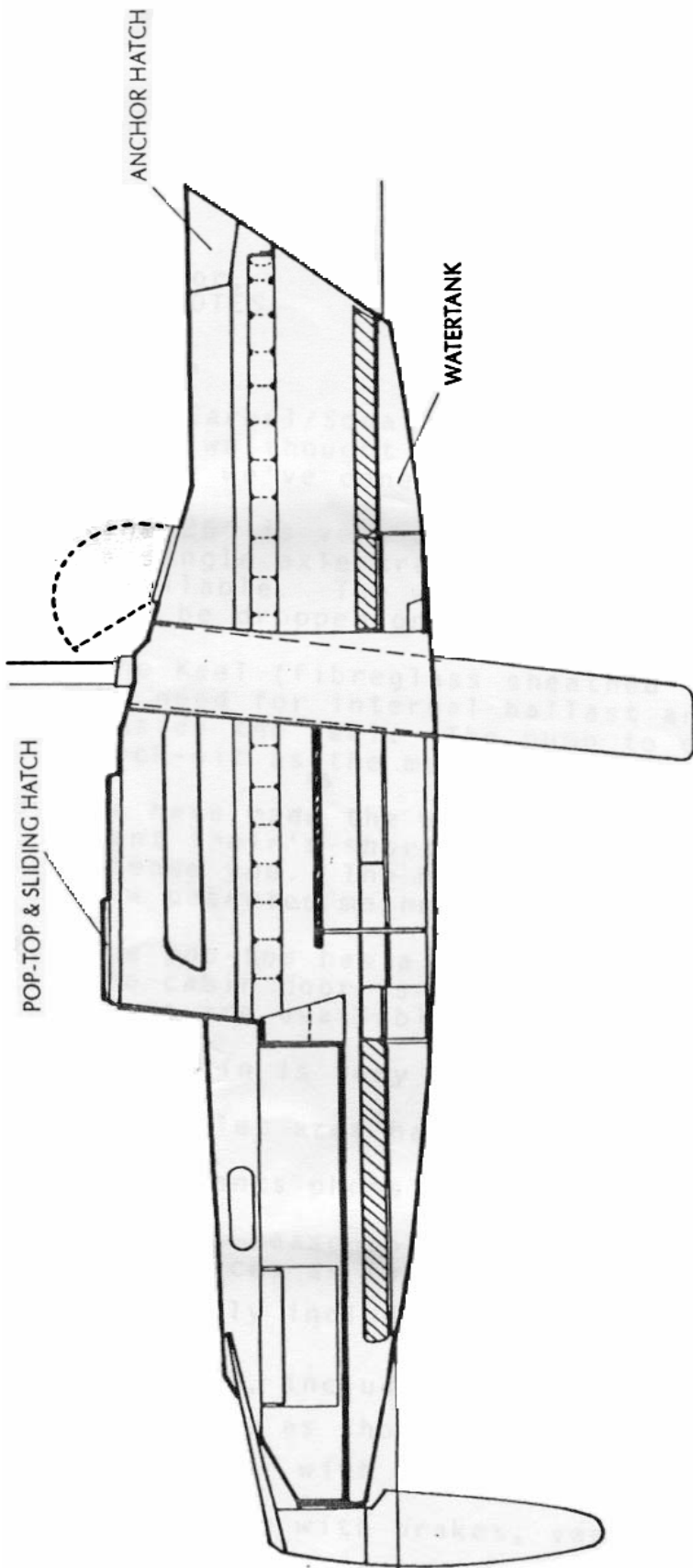
Stove with grill. **\$100.**

Prices are ex factory and inclusive of sales tax.
Prices and specifications are subject to change without notice.

July 1992

Mast fitted with new EASY LIFT (Pat. Pend.) one man mast raising and storing system.

Member of the Boating Industry Association of NSW.





SYDNEY SAILBOAT CENTRE (N.S.W.) PTY. LIMITED

INCORPORATED IN NEW SOUTH WALES

MIDDLE HARBOUR: BY THE BRIDGE, THE SPIT, MOSMAN 2088. (02) 969-2144
PITTWATER: Cnr. MONA VALE & PITTWATER ROADS, MONA VALE 2103. (02) 997-3077
CITY: AMERICAN EXPRESS TOWER, Cnr. KING & GEORGE STREETS, SYDNEY 2000. (02) 27-5620

1st November, 1984

SONATA 26

BASIC ASSEMBLY - Fibreglass hull with furniture bonded in. Deck bonded to hull. Centreboard/keel fitted. Windows cut out. Anchor well bonded in. Cockpit drains fitted. Towing eye fitted. Supplied loose - Rudder Box. Rudder blade. Fibreglass hatches.

Price \$10,656.00

READY TO SAIL - As above with windows fitted. All hatches fitted. Gunwales fitted. Pop Top with mechanism fitted. Stem fitting and chainplates fitted. 2 Halyard winches with cleats. 2 sheet winches with cleats. Mainsheet traveller and car. Rudder fitted. Mooring cleats fitted. Mast, boom with standing and running rigging. Adjustable backstay, Boom Vang. Mainsail with battens and insignia. Jib. Mainsheets and jib sheet.

Price \$17,550.00

CRUISE PACKAGE - As above with interior carpet. Teak trim. Galley unit with sink, pump, water tank, 2 burner stove, built in ice box, plate and cutlery racks. Separate toilet compartment with porta potti toilet. Bunk cushions. Pulpit, stanchions and lifelines. Navigation and interior lights with switches and fuses. Bilge pump. Fire extinguisher. O/board bracket.

Price \$22,500.00

OPTIONAL EXTRAS

Bunk cushions	\$ 883.00
Spinnaker Pole & Gear	268.00
Porta Potti Toilet	152.00
Pump out toilet	365.00
Outboard bracket	120.00
Carpet hull sides	392.00
Compass (bulkhead)	165.00
Nav. lights, switch & fuse	142.00
Interior lights, switch & fuse	101.00
Battery box with 12 vlt. battery	130.00
Fire extinguisher	48.00
Bilge Pump	120.00
Pulpit, lifelines & stanchions	810.00
VDO Speedo	325.00
Twin spreader rig with running backstay package	395.00
Anchor, chain & line	95.00
2 Burner Metho. stove	130.00
Teak trim fitted	1,460.00
Water tank, sink & pump fitted	215.00
Trailer with brakes	2,590.00
Extra for power winch	545.00
Diesel inboard	p.o.a.
Extra for lead antimony keel	512.00
Outboard well	285.00
Jiffy reefing (2 reefs)	84.00

SAILS - Spinnaker \$753.00, No.1 Genoa \$665.00, Storm Jib \$196.00

Prices are ex factory and are inclusive of Sales Tax.

Prices and specifications are subject to change without notice.

TERMS - 30% Deposit with order, balance payable prior to delivery from factory.

7742r Sails
16146
9356
31856